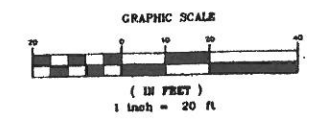


SHEET SIZE 10 OF 10

MATCH LINE

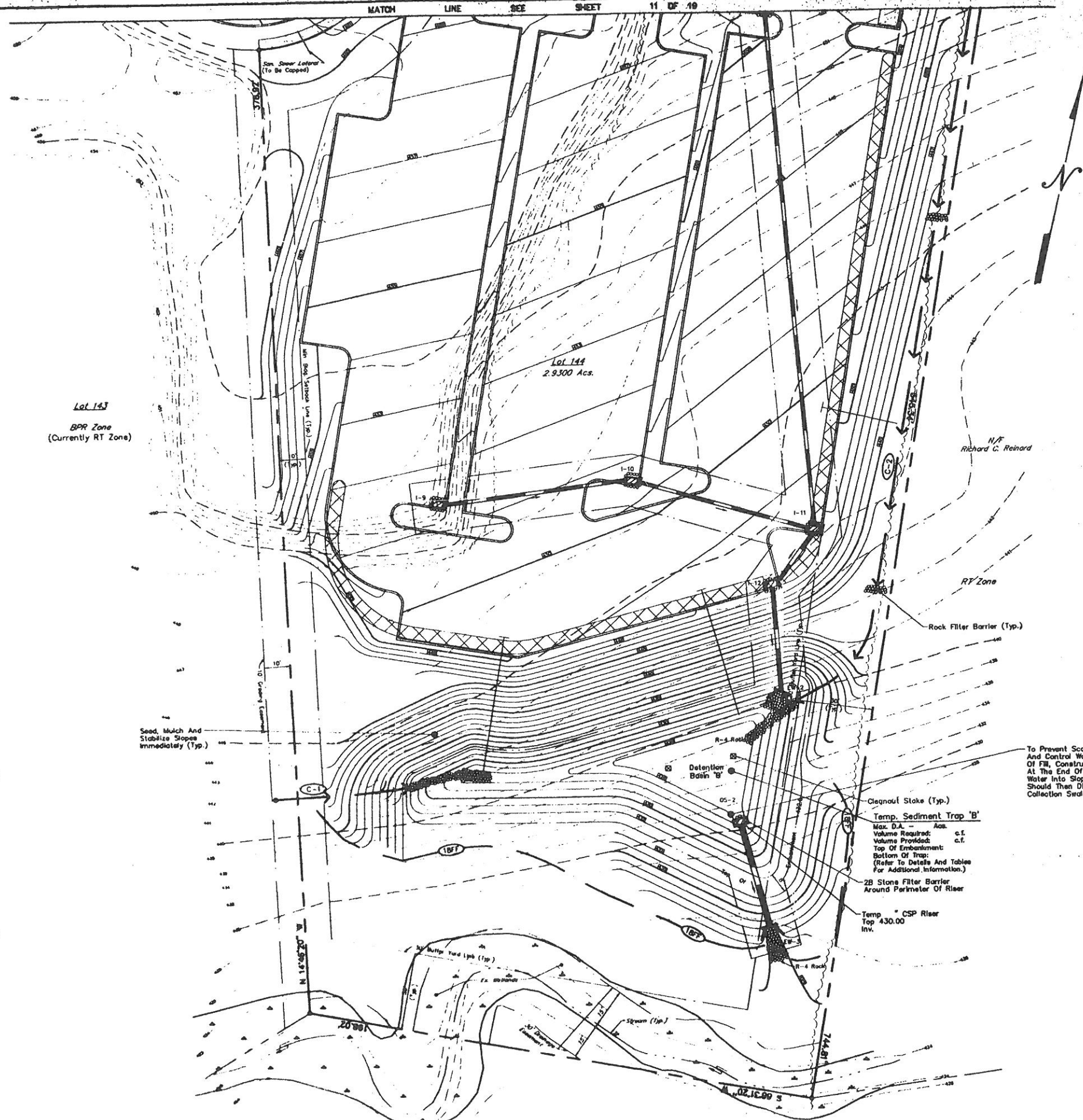
MATCH LINE SHEET 12 OF 10



LEGEND:
 Vertical Lettering Represents Proposed Conditions.
 Slanted Lettering Represents Existing Conditions.

- LEGEND**
- EXISTING CONTOUR
 - PROPOSED CONTOUR
 - SOILS SURVEY LINE & DESIGNATION
 - STABILIZED CONSTRUCTION ENTRANCE
 - FILTER FABRIC FENCE
 - ROCK DAM FILTER
 - ROCK BARRIER FILTER
 - COLLECTION SWALE
 - DIVERSION SWALE
 - ROCK ENERGY DISSIPATOR
 - DRAINAGE DIVIDE
 - LIMIT OF CONSTRUCTION
 - OFF-SITE DRAINAGE AREA
 - TEMPORARY TOPSOIL STORAGE AREA

<p>PRELIMINARY/FINAL SUBDIVISION & LAND DEVELOPMENT PLAN</p> <p>EROSION & SEDIMENTATION CONTROL PLAN</p>	<p>DAUPHIN ENGINEERING COMPANY ENGINEERS, CONSULTANTS & PLANNERS 44 Oak Park Road • Mechanicsburg, PA 17055 PHONE: (717) 546-5142 E-MAIL: info@dauphineng.com</p>
<p>CHECKED BY: J.W.S.</p> <p>DRAWN BY: M.D.S.</p> <p>SCALE: 1" = 20'</p> <p>CONTOUR INT: 1'</p> <p>DATE: 7/14/00</p> <p>SHEET NO: 11 OF 10</p>	<p>CENTURY DRIVE ASSOCIATES (Owner & Developer) 856 CENTURY DRIVE MECHANICSBURG, PA 17055 PHONE: (717) 897-3304</p> <p>STURBRIDGE - LOTS 144 - 148 DAUPHIN COUNTY, PA</p>
<p>DATE: 7/27/00</p> <p>REVISIONS:</p>	



- LEGEND**
- EXISTING CONTOUR
 - - - PROPOSED CONTOUR
 - SOILS SURVEY LINE & DESIGNATION
 - STABILIZED CONSTRUCTION ENTRANCE
 - FILTER FABRIC FENCE
 - ROCK DAM FILTER
 - ROCK BARRIER FILTER
 - COLLECTION SWALE
 - DIVERSION SWALE
 - ROCK ENERGY DISSIPATOR
 - DRAINAGE DITCH
 - LIMIT OF CONSTRUCTION
 - OFF-SITE DRAINAGE AREA
 - TEMPORARY TOPSOIL STORAGE AREA

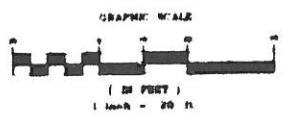
Seed, Mulch And Stabilize Slopes Immediately (Typ.)

To Prevent Scouring Of Fill Slope And Control Water Runoff During Of Fill, Construct An Earth Berm At The End Of Each Day. Direct Water Into Slope Drain Which Should Then Discharge Into Collection Swale Or Sediment Trap.

Cleanout Stake (Typ.)
Temp. Sediment Trap 'B'
Max. D.A. - Acs.
Volume Required: c.f.
Volume Provided: c.f.
Top Of Embankment:
Bottom Of Trap:
(Refer To Details And Tables For Additional Information.)

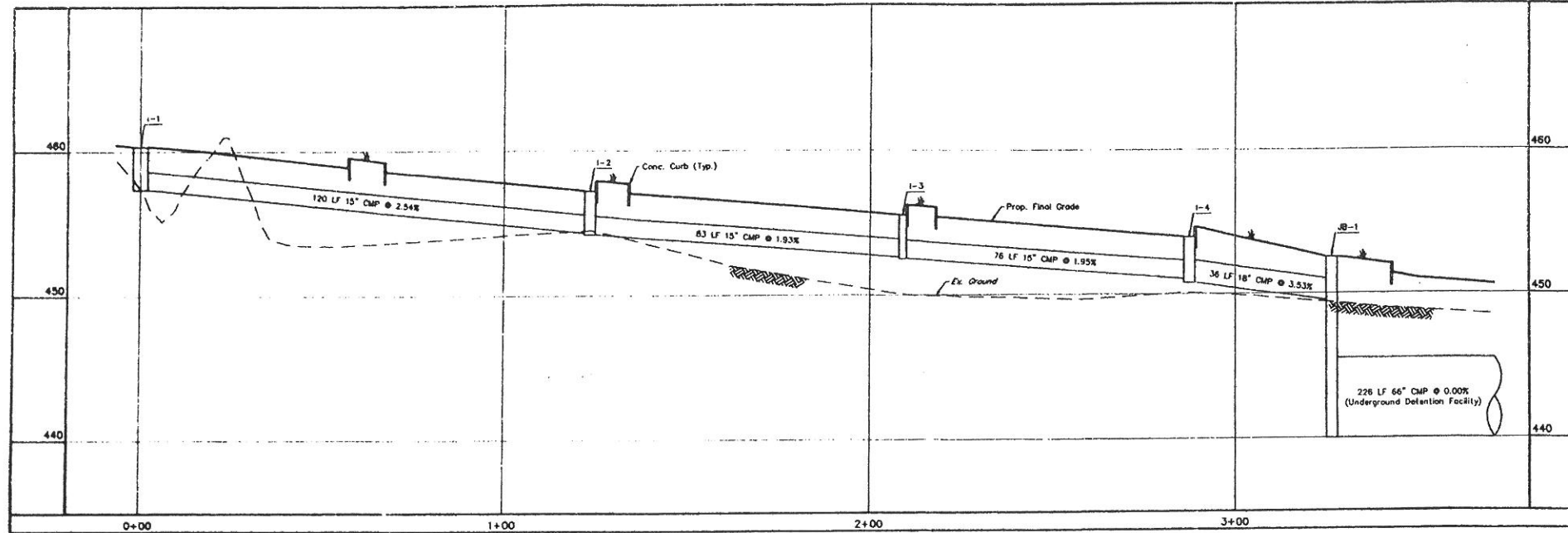
2B Stone Filter Barrier Around Perimeter Of Riser

Temp. CSP Riser
Top 430.00
Inv.

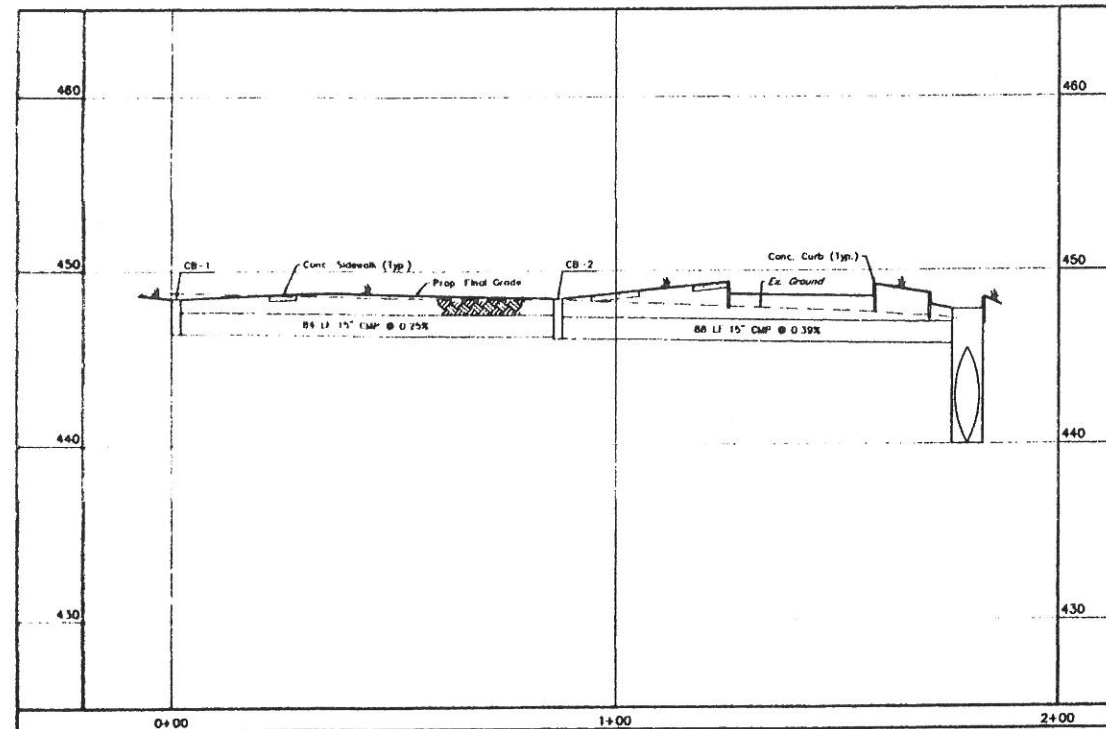


LEGEND:
Vertical Lettering Represents Proposed Conditions
Shaded Lettering Represents Existing Conditions

<p>Dauphin Engineering Company CONSULTANTS • PLANNERS 44 Oak Park Road • Harrisburg, PA 17108 PHONE: (717) 661-1034 FAX: (717) 661-1034 E-MAIL: DAUPHIN@DAUPHIN.COM</p>		<p>DATE: 7/27/00</p> <p>REVISIONS:</p>
<p>CENTURY DRIVE ASSOCIATES (Owner & Developer) 856 CENTURY DRIVE MECHANICSBURG, PA 17055 PHONE: (717) 661-3804</p>		<p>DATE: 7/27/00</p> <p>REVISIONS:</p>
<p>PRELIMINARY/FINAL SUBDIVISION & LAND DEVELOPMENT PLAN</p>		<p>STURBRIDGE - LOTS 144 - 146 DAUPHIN COUNTY, PA</p>
<p>EROSION & SEDIMENTATION CONTROL PLAN</p>		<p>CHECKED BY: J.W.S.</p> <p>DRAWN BY: M.D.S.</p> <p>SCALE: 1" = 20'</p> <p>CONTOUR INT: 1'</p> <p>DATE: 7/14/00</p> <p>SHEET NO. 12 OF 10</p>



I-1 TO JB-1
SCALE: 1" = 20' H
1" = 5' V



CB-1 TO I-5
SCALE: 1" = 20' H
1" = 5' V

STORM SEWER INLET & PIPE CHART

INLET NO.	INLET TYPE	TOP	INV. IN	INV. OUT	PIPE LENGTH	PIPE SIZE	SLOPE
EW-1	DW-Endwall	-	453.50	-	126 LF	18" CMP	3.06%
Ex. Inlet	C	453.89	449.65	449.57			
I-1	C	460.35	-	457.35	120 LF	15" CMP	2.54%
I-2	C	457.20	454.30	454.20	83 LF	15" CMP	1.93%
I-3	C	455.50	452.60	452.50	76 LF	15" CMP	1.95%
I-4	C	453.82	451.02	450.77	36 LF	18" CMP	3.53%
JB-1	(Modified) Junction Box	452.80	449.80	440.00			
CB-1	24"x24" Catch Basin	448.40	-	446.40	84 LF	15" CMP	0.25%
CB-2	24"x24" Catch Basin	448.40	446.18	446.09	88 LF	15" CMP	0.38%
I-5	Modified Inlet	447.75	445.75	440.00			
CB-3	24"x24" Catch Basin	448.40	-	446.40	74 LF	15" CMP	0.25%
CB-4	24"x24" Catch Basin	448.40	446.22	446.12	80 LF	15" CMP	0.56%
I-6	Modified Inlet	447.67	445.67	440.00	98 LF	66" CMP	0.00%
I-5	Modified Inlet	447.75	440.00	440.00	228 LF	66" CMP	0.00%
JB-1	(Modified) Junction Box	452.80	440.00	440.00	0 LF	18"	0.00%
JB-2	(Modified) Junction Box	452.00	440.00	440.00	260 LF	66" CMP	0.00%
OS-1	Modified Conc. Outlet Structure	447.00	440.00	440.00	59 LF	24" CMP	1.03%
I-13	Modified Inlet	443.00	439.38	439.34	1 LF	24" CMP	2.00%
Ex. Inlet (To Be Capped)	M	443.42	439.32	439.27			
I-7	C	460.45	-	457.45	112 LF	15" CMP	4.96%
I-8	C	454.90	451.90	451.80	203 LF	15" CMP	3.68%
I-11	C	448.12	444.30	444.05	28 LF	18" CMP	2.00%
I-12	C	447.85	443.49	439.00	41 LF	18" CMP	26.83%
EW-2	DW-Endwall	-	-	428.00			
I-9	C	451.28	-	447.20	71 LF	15" CMP	1.00%
I-10	C	450.57	446.49	446.39	69 LF	15" CMP	3.03%
I-11	C	448.12	444.30	444.05			
OS-2	Conc. Outlet Structure	430.00	-	428.00	42 LF	24" CMP	1.50%
EW-3	DW-Endwall	-	-	425.37			

LEGEND:
Vertical Lettering Represents Proposed Conditions
Horizontal Lettering Represents Existing Conditions

DAUPHIN ENGINEERING COMPANY
CONSULTANTS PLANNERS
44 CHESTNUT ST. 1ST FL. PHILADELPHIA, PA 19106
PHONE: (717) 545-5742 FAX: (717) 545-1034
E-MAIL: DAUPHIN@AOL.COM

DATE: 7/27/00
TOWNSHIP PLANNING COMMISSION COMMENTS - 7/24/00
BY: M.D.S.

CENTURY DRIVE ASSOCIATES
(Owner & Developer)
866 CENTURY DRIVE MECHANICSBURG, PA 17055
PHONE: (717) 897-3304

SUSQUEHANNA TOWNSHIP
STURBRIDGE - LOTS 144 - 146
DAUPHIN COUNTY, PA

PRELIMINARY/FINAL
SUBDIVISION & LAND DEVELOPMENT PLAN

PROFILES

CHECKED BY: J.W.S.

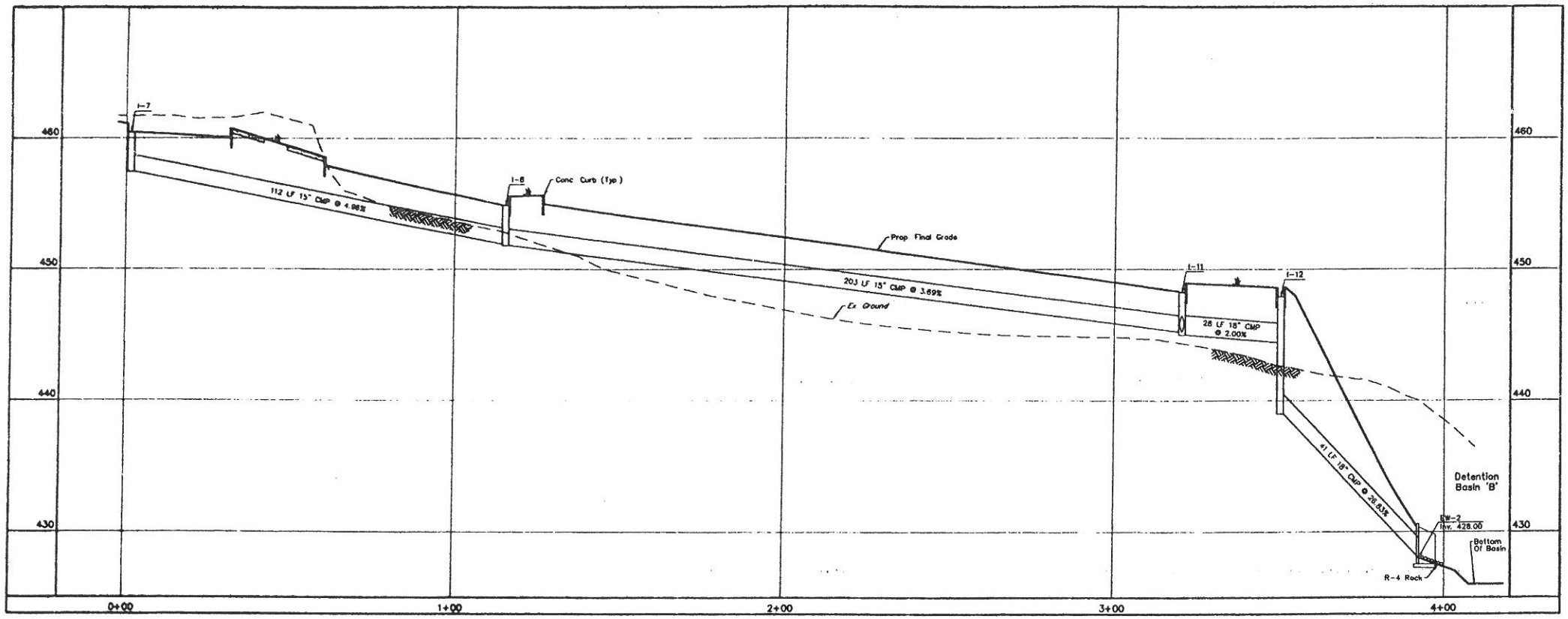
DRAWN BY: M.D.S.

SCALE: AS NOTED

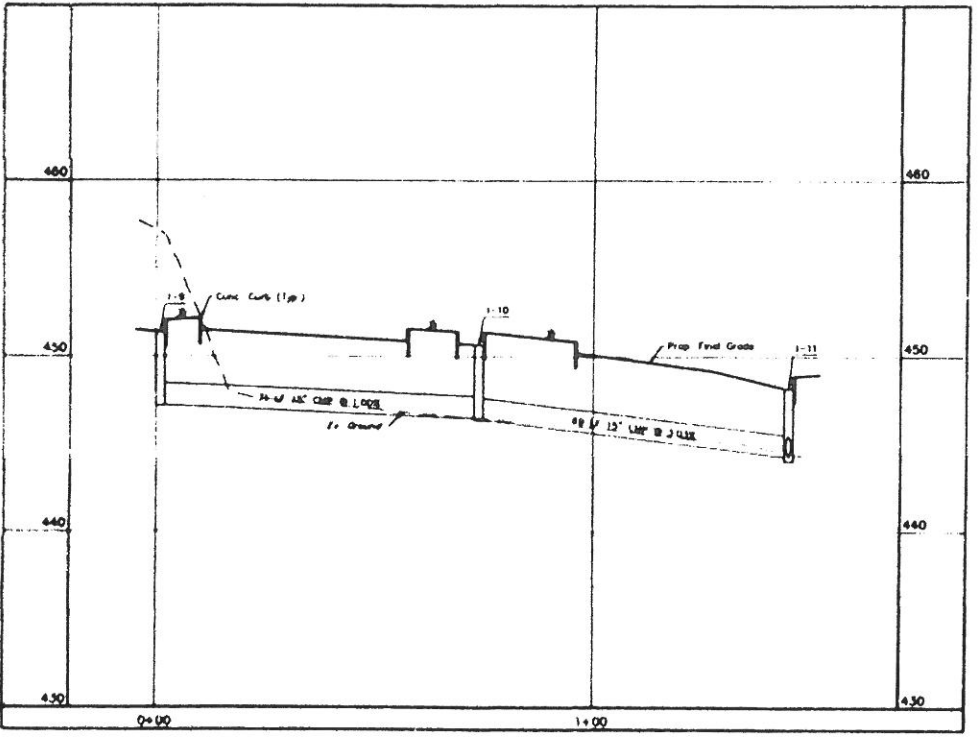
CONTOUR POINT: N/A

DATE: 7/14/00

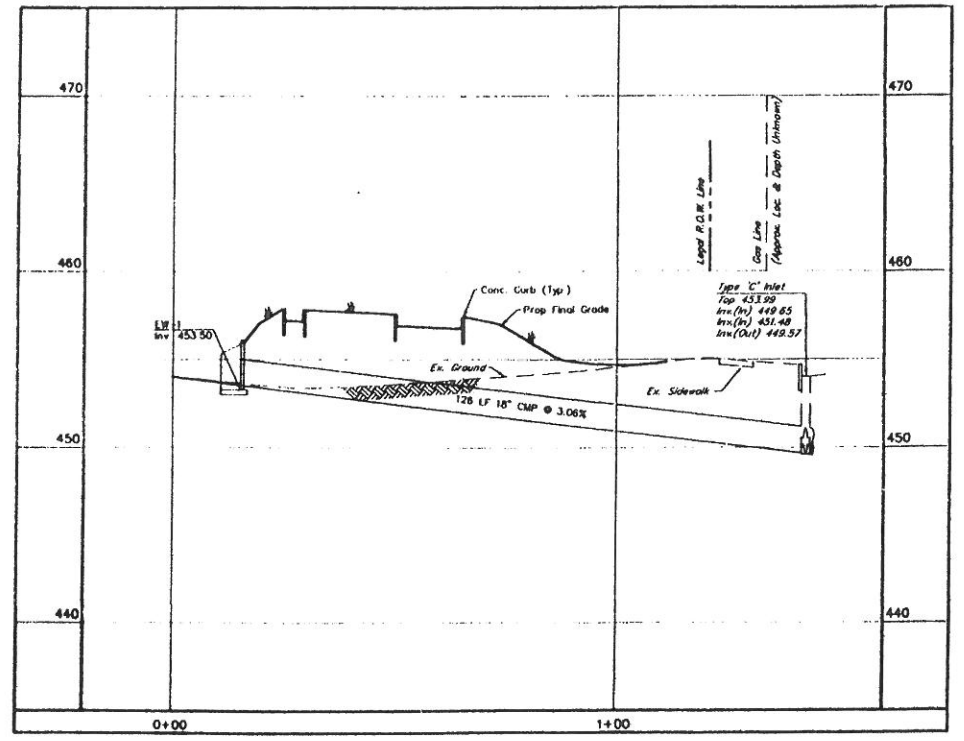
SHEET NO. 13 OF 19



I-7 TO EW-2
SCALE: 1" = 20' H
1" = 5' V



I-8 TO I-11
SCALE: 1" = 20' H
1" = 5' V



EW-1 TO Ex. Inlet
SCALE: 1" = 20' H
1" = 5' V

STORM SEWER INLET & PIPE CHART

INLET NO.	INLET TYPE	TOP	INV. IN	INV. OUT	PIPE LENGTH	PIPE SIZE	SLOPE
EW-1	DW-Endwall	-	453.50	-	-	-	-
Ex. Inlet	C	453.99	448.85	449.57	128 LF	18" CMP	3.06%
I-1	C	460.35	-	457.35	-	-	-
I-2	C	457.20	454.30	454.20	120 LF	15" CMP	2.54%
I-3	C	455.50	452.60	452.50	83 LF	15" CMP	1.93%
I-4	C	453.92	451.02	450.77	78 LF	15" CMP	1.05%
JB-1	(Modified) Junction Box	452.90	449.50	440.00	38 LF	18" CMP	3.53%
CB-1	24"x24" Catch Basin	448.40	-	448.40	84 LF	15" CMP	0.25%
CB-2	24"x24" Catch Basin	448.40	446.19	446.09	86 LF	15" CMP	0.39%
I-5	Modified Inlet	447.75	445.75	440.00	-	-	-
CB-3	24"x24" Catch Basin	448.40	-	446.40	74 LF	15" CMP	0.25%
CB-4	24"x24" Catch Basin	448.40	446.22	446.12	80 LF	15" CMP	0.56%
I-8	Modified Inlet	447.87	445.87	440.00	96 LF	66" CMP	0.00%
I-5	Modified Inlet	447.75	440.00	440.00	228 LF	66" CMP	0.00%
JB-1	(Modified) Junction Box	452.50	440.00	440.00	0 LF	18"	0.00%
JB-2	(Modified) Junction Box	452.00	440.00	440.00	260 LF	66" CMP	0.00%
OS-1	Outlet Structure	447.00	440.00	440.00	59 LF	24" CMP	1.03%
I-13	Modified Inlet	443.00	439.39	439.34	1 LF	24" CMP	2.00%
Ex. Inlet (To Be Copied)	C	463.42	439.32	439.27	-	-	-
I-7	C	460.45	-	457.45	112 LF	15" CMP	4.96%
I-8	C	454.90	451.90	451.80	203 LF	15" CMP	3.89%
I-11	C	448.12	444.30	444.05	28 LF	18" CMP	2.00%
I-12	C	447.85	443.49	439.00	41 LF	18" CMP	26.83%
EW-2	DW-Endwall	-	-	423.00	-	-	-
I-9	C	451.28	-	447.20	-	-	-
I-10	C	450.57	446.49	446.39	71 LF	15" CMP	1.00%
I-11	C	448.12	444.30	444.05	68 LF	15" CMP	3.03%
OS-2	Conc. Outlet Structure	430.00	-	426.00	-	-	-
EW-3	DW-Endwall	-	-	425.37	-	-	-

REVISIONS

NO.	DATE	REVISIONS

7/27/00

TOWNSHIP PLANNING COMMISSION COMMENTS - 7/27/00

M.D.S. REV.

Dauphin Engineering Company
ENGINEERS • CONSULTANTS • PLANNERS
41 Oak Park Road • Harrisburg, PA 17110
PHONE: (717) 645-1034
FAX: (717) 645-1034
E-MAIL: DAUPHIN@DAUPHIN.COM

CENTURY DRIVE ASSOCIATES
(Owner & Developer)
866 CENTURY DRIVE • MECHANICSBURG, PA 17055
PHONE: (717) 687-3304

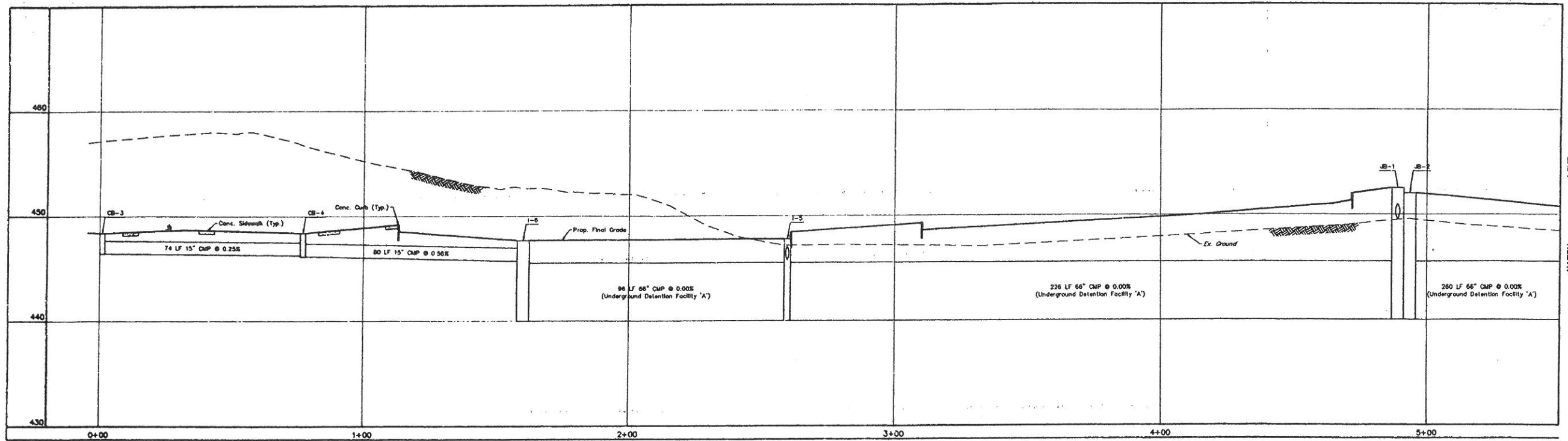
PRELIMINARY/FINAL
SUBDIVISION & LAND DEVELOPMENT PLAN

PROFILES

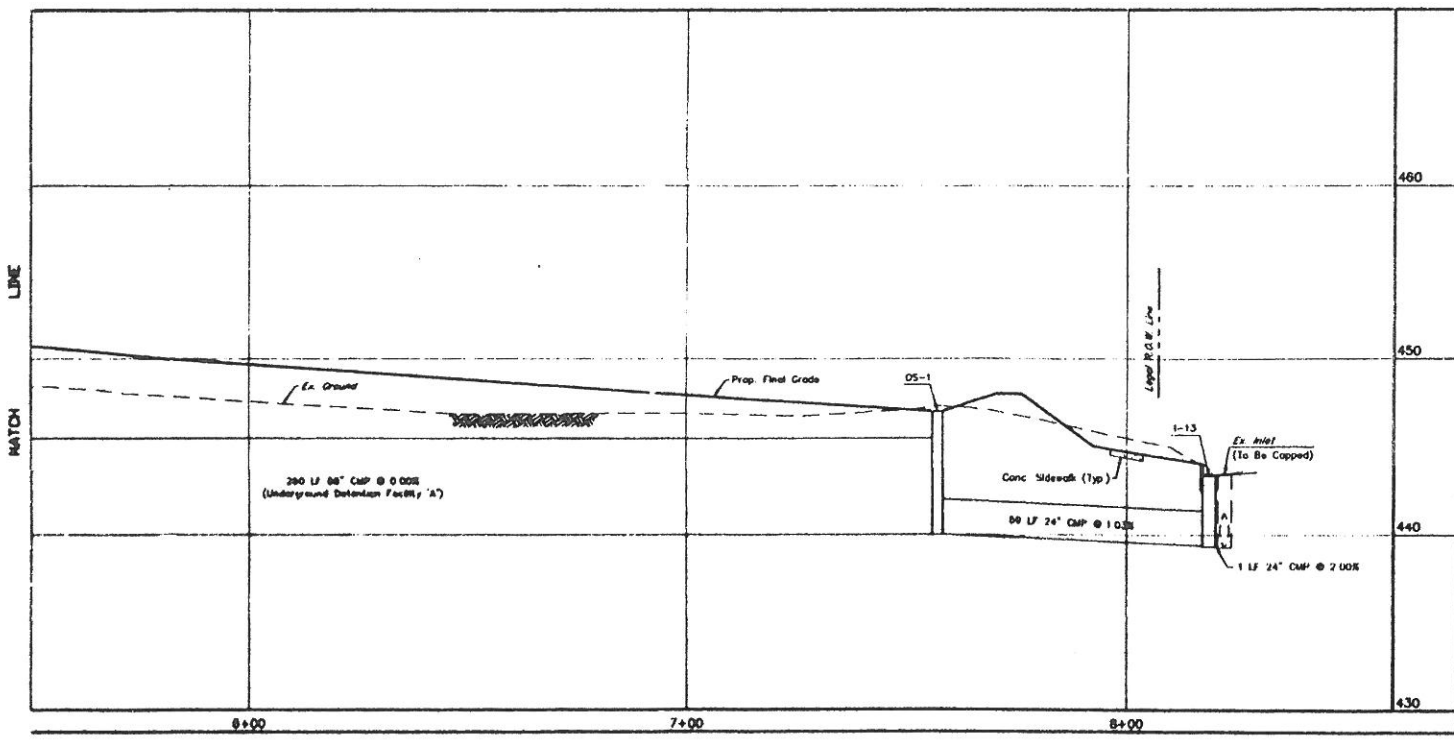
STURBRIDGE - LOTS 144 - 146
SUSQUEHANNA TOWNSHIP
DAUPHIN COUNTY, PA

CHECKED BY: J.W.S.
DRAWN BY: M.D.S.
SCALE: AS NOTED
CONTOUR INT: N/A
DATE: 7/14/00
SHEET NO. 14 OF 19

LEGEND:
Vertical Lettering Represents Proposed Conditions
Horizontal Lettering Represents Existing Conditions



CB-3 TO Ex. Inlet
SCALE: 1" = 20' H
1" = 5' V



CB-3 TO Ex. Inlet
SCALE: 1" = 20' H
1" = 5' V

STORM SEWER INLET & PIPE CHART

INLET NO.	INLET TYPE	TOP	INV. IN	INV. OUT	PIPE LENGTH	PIPE SIZE	SLOPE
EW-1	DW-Endwall	-	453.50	-	126 LF	18" CMP	3.08%
Ex. Inlet	C	451.99	449.65	449.57	-	-	-
I-1	C	460.35	-	457.35	120 LF	15" CMP	2.54%
I-2	C	457.20	454.30	454.20	83 LF	15" CMP	1.93%
I-3	C	455.50	452.80	452.50	76 LF	15" CMP	1.95%
I-4	C	453.92	451.02	450.77	38 LF	18" CMP	3.63%
JB-1	(Modified) Junction Box	462.80	448.60	440.00	-	-	-
CB-1	24"x24" Catch Basin	448.40	-	446.40	84 LF	15" CMP	0.25%
CB-2	24"x24" Catch Basin	448.40	446.19	446.09	86 LF	15" CMP	0.39%
I-5	Modified Inlet	447.75	445.75	440.00	-	-	-
CB-3	24"x24" Catch Basin	448.40	-	446.40	74 LF	15" CMP	0.25%
CB-4	24"x24" Catch Basin	448.40	446.22	446.12	80 LF	15" CMP	0.58%
I-6	Modified Inlet	447.87	445.67	440.00	-	-	-
I-5	Modified Inlet	447.75	440.00	440.00	96 LF	66" CMP	0.00%
JB-1	(Modified) Junction Box	452.50	440.00	440.00	0 LF	18"	0.00%
JB-2	(Modified) Junction Box	452.00	440.00	440.00	260 LF	66" CMP	0.00%
OS-1	Modified Conc. Outlet Structure	447.00	440.00	440.00	59 LF	24" CMP	1.03%
I-13	Modified Inlet	443.00	438.39	439.34	1 LF	24" CMP	2.00%
Ex. Inlet	M (To Be Capped)	441.42	438.32	438.27	-	-	-
I-7	C	460.45	-	457.45	112 LF	15" CMP	4.88%
I-8	C	454.90	451.80	451.80	203 LF	15" CMP	3.69%
I-11	C	448.12	444.30	444.05	28 LF	18" CMP	2.00%
I-12	C	447.85	443.49	439.00	41 LF	18" CMP	28.83%
EW-2	DW-Endwall	-	-	428.00	-	-	-
I-9	C	451.28	-	447.20	71 LF	15" CMP	1.00%
I-10	C	450.57	446.49	446.39	89 LF	15" CMP	3.03%
I-11	C	448.12	444.30	444.05	-	-	-
OS-2	Conc. Outlet Structure	430.00	-	428.00	42 LF	24" CMP	1.50%
EW-3	DW-Endwall	-	-	425.37	-	-	-

LEGEND:
Vertical Lettering Represents Proposed Conditions.
Sloped Lettering Represents Existing Conditions.

**PRELIMINARY/FINAL
SUBDIVISION & LAND DEVELOPMENT PLAN
PROFILES**

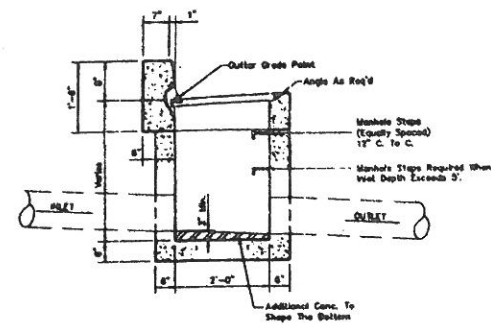
CENTURY DRIVE ASSOCIATES
(Owner & Developer)
856 CENTURY DRIVE
MECHANICSBURG, PA 17056
PHONE: (717) 697-3304

**Dauphin
Engineering
Company**
ENGINEERS - CONSULTANTS - PLANNERS
44 Oak Pot Road • Harrisburg, PA 17108
PHONE: (717) 546-5742
FAX: (717) 545-1004
E-MAIL: DAUPHIN@DCE.COM

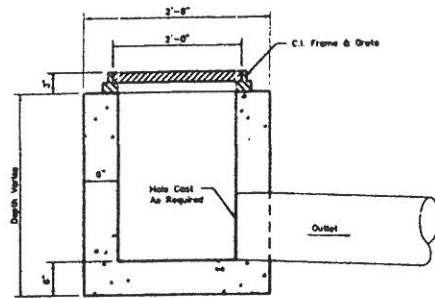
STURBRIDGE - LOTS 144 - 146
SUSQUEHANNA TOWNSHIP
DAUPHIN COUNTY, PA

CHECKED BY: J.W.V.S.
DRAWN BY: M.D.S.
SCALE: 1/32" NOTED
CONTOUR INT: N/A
DATE: 7/14/00
SHEET NO. 15 OF 19

TOWNSHIP PLANNING COMMISSION COMMENTS - 7/27/00
DATE
REVISIONS
BY



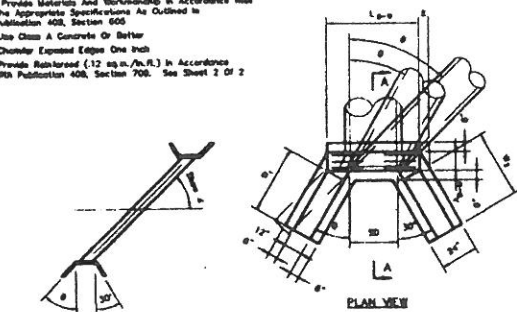
TYPE "C" INLET
NOT TO SCALE



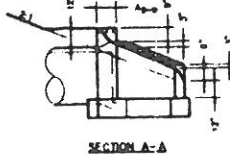
24" X 24" CATCH BASIN
NOT TO SCALE

Notes

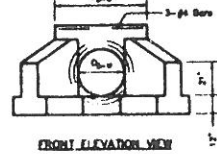
1. Provide Materials And Workmanship In Accordance With The Appropriate Specifications As Outlined In Publication 408, Section 600.
2. Use Class A Concrete Or Better.
3. Chamfer Exposed Edges One Inch.
4. Provide Reinforced (12 sq in./sq ft) In Accordance With Publication 408, Section 700. See Sheet 2 Of 2.



PLAN VIEW



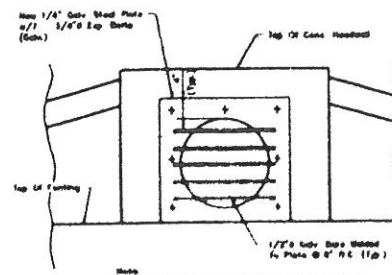
SECTION A-A



FRONT ELEVATION VIEW

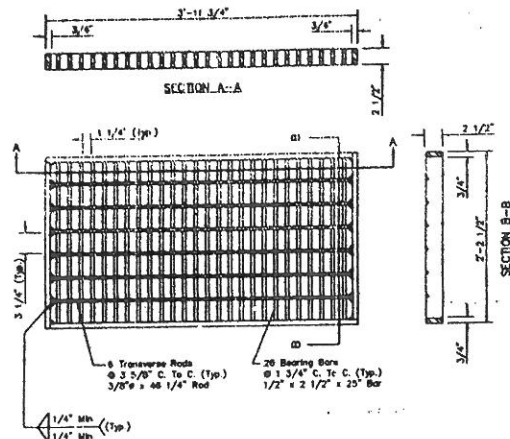
See Table A, For Dimensions Not Indicated. Table A Is Found On Sheet 1 Of 2 On RC-31 In The PennDOT Standards For Roadway Construction.

TYPE D-W ENDWALL
NOT TO SCALE

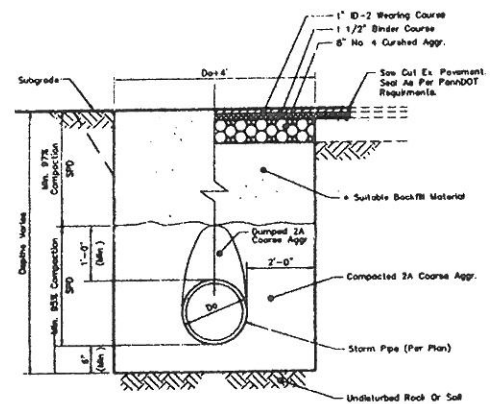


PROTECTIVE BAR SCREEN
NOT TO SCALE

Note: Required Only For Pipes 24" Diameter (Or Equivalent) And Over (1.0m) For Manholes And Trenches.

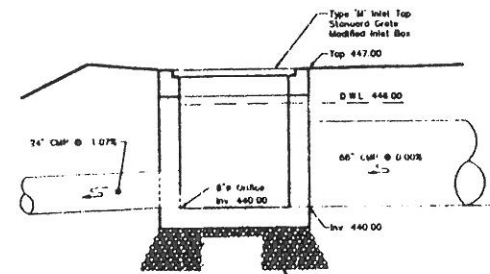


STRUCTURAL STEEL GRATE BICYCLE SAFE
NOT TO SCALE

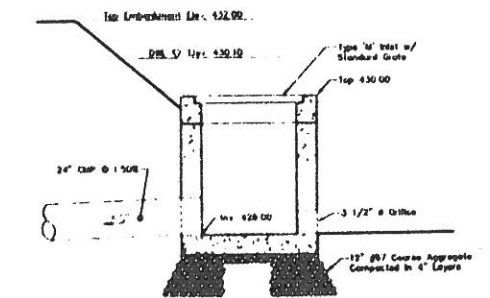


TRENCH
NOT TO SCALE

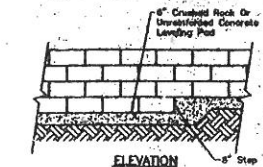
- Do = Outside Diameter Of Pipe, Feet
SPD = Standard Fractor Density
= Suitable Material
= Material Containing No Debris, Organic Matter, Frozen Material Or Large Stones With A Diameter Greater Than One-Half The Thickness Of The Compacted Layers Being Placed.
- Notes:
Place 2A Course Aggregate Material, (On 4" Lifts) Adjacent To The Lower Haunches To A Height Of 1' Above Top Of Pipe. Compact To 95% SPD. Tuck The Backfill Material And Continue Embankment In Accordance With Section 600.



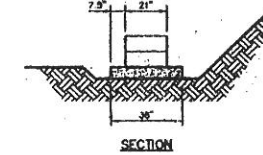
UNDERGROUND DETENTION FACILITY "A" CONCRETE OUTLET STRUCTURE
NOT TO SCALE



BASIN "B" CONCRETE OUTLET STRUCTURE
NOT TO SCALE

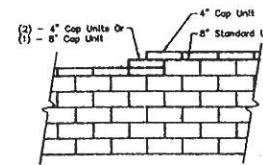


ELEVATION

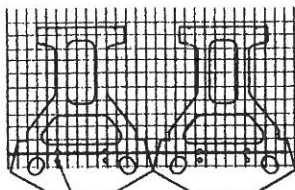


SECTION

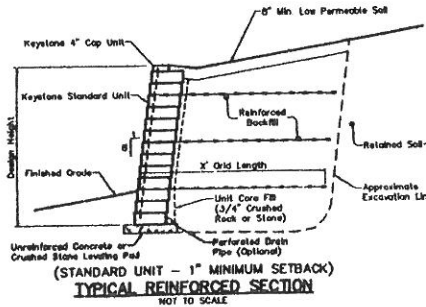
LEVELING PAD DETAIL
NOT TO SCALE



TOP OF WALL STEPS
NOT TO SCALE



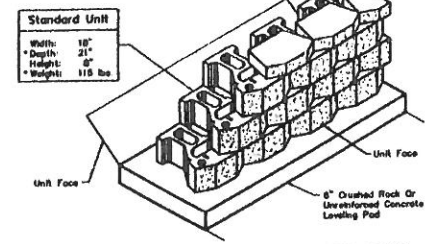
GRID & PIN CONNECTION
NOT TO SCALE



TYPICAL REINFORCED SECTION
NOT TO SCALE

Base Leveling Pad Notes

1. The Leveling Pad Is To Be Constructed Of Crushed Stone Or 2,000 PSI Unreinforced Concrete.
2. The Base Foundation Is To Be Approved By The Site Geotechnical Engineer Prior To Placement On The Leveling Pad.



STANDARD UNIT/BASE PAD ISOMETRIC VIEW
NOT TO SCALE

*Dimensions & Weight May Vary By Region.

KEYSTONE WALL SYSTEM DETAILS

KEYSTONE WALL GENERAL NOTES:

The Retaining Wall Shall Be As Manufactured By Keystone Retaining Wall Systems Or Approved Equal. All Construction Shall Conform With The Manufacturer's Specifications And Installation Recommendations. The Contractor Shall Provide Structural Design Calculations For The Wall, Sealed By A Registered Professional Engineer In The State Of Pennsylvania, For The Site Engineer's Review And Approval Prior To Construction.

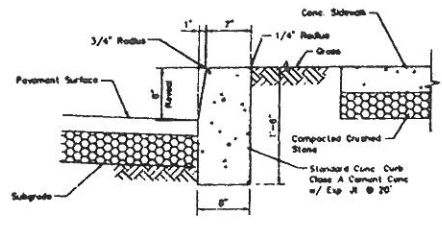
DATE	7/27/00
BY	J.W.S.
REVISIONS	TOWNSHIP PLANNING COMMISSION COMMENTS - 7/24/00

Dauphin Engineering Company
ENGINEERING CONSULTANTS - PLANNERS
24 Locust St. - 4th Floor - PA 17105
PHONE: (717) 545-3342
FAX: (717) 545-1034
E-MAIL: DAUPHIN@AOL.COM

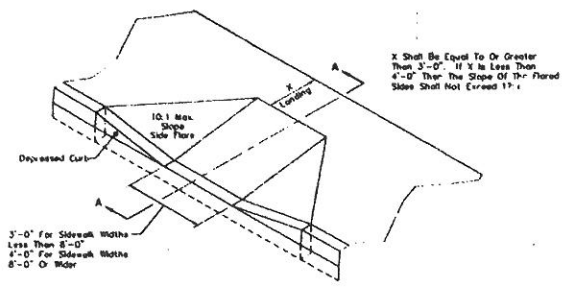
CENTURY DRIVE ASSOCIATES
(Owner & Developer)
856 CENTURY DRIVE MECHANICSBURG, PA 17055
PHONE: (717) 697-3304
STURBRIDGE - LOTS 144 - 146
DAUPHIN COUNTY, PA
SUSQUEHANNA TOWNSHIP

PRELIMINARY/FINAL SUBDIVISION & LAND DEVELOPMENT PLAN
MISCELLANEOUS CONSTRUCTION DETAILS

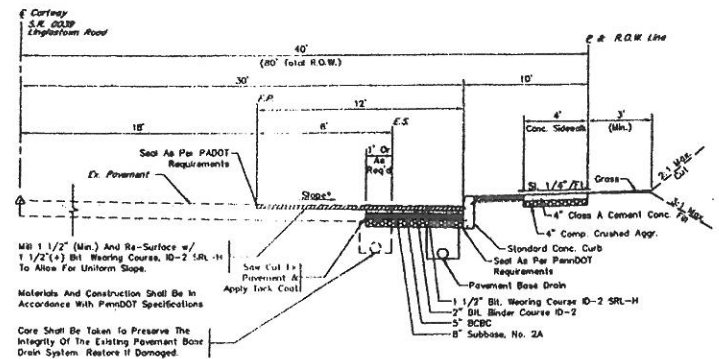
CHECKED BY:	J.W.S.
DRAWN BY:	C.K.N.
SCALE:	AS NOTED
CONTOUR INT:	N/A
DATE:	7/14/00
SHEET NO:	16 OF 19



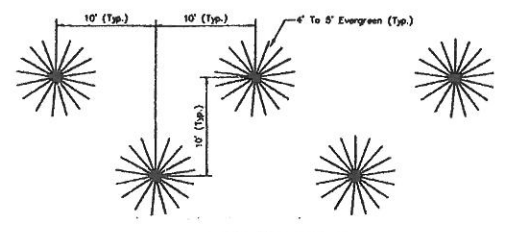
PLAIN CEMENT CONCRETE CURB W/ SIDEWALK
NOT TO SCALE



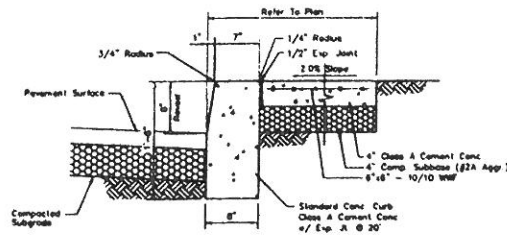
TYPE 1 CURB RAMP NEW CONSTRUCTION



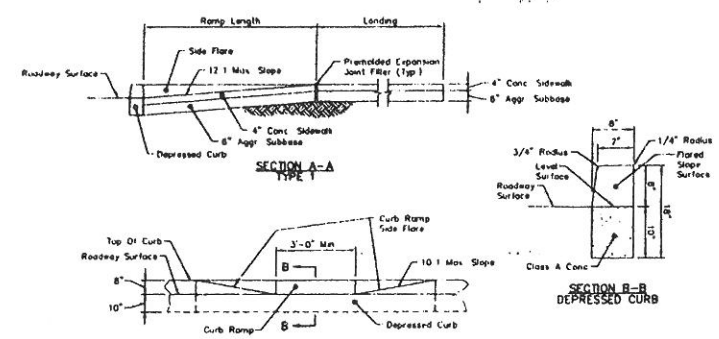
TYPICAL SECTION - WIDENING S.R. 0039
NOT TO SCALE



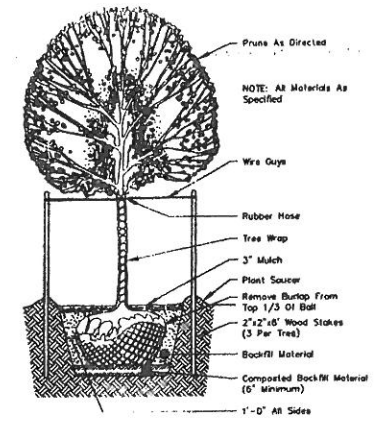
TYPICAL LANDSCAPE / PLANTING PATTERN
NOT TO SCALE



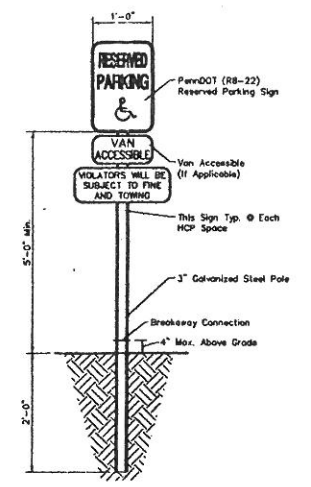
INTERIOR CURB/SIDEWALK
NOT TO SCALE



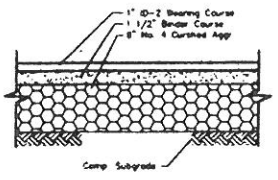
CURB RAMPS TYPE 1
NOT TO SCALE



TYPICAL DECIDUOUS TREE PLANTING
NOT TO SCALE



HANDICAP PARKING SIGN
NOT TO SCALE



BITUMINOUS CONCRETE PAVING
NOT TO SCALE

TABLE A
CURB RAMP DIMENSIONS NEW CONSTRUCTION

RISE OF RAMP	MAX. RAMP SLOPE	NORMAL RAMP LENGTH (12:1)	SIDE FLARE DIMENSION AT CURB (10:1)	SIDE FLARE DIMENSION AT CURB (12:1)
3"	12:1	3.6 Ft	2.5 Ft	3.0 Ft
4"	12:1	4.0 Ft	3.3 Ft	4.0 Ft
5"	12:1	5.0 Ft	4.2 Ft	5.0 Ft
6"	12:1	6.0 Ft	5.0 Ft	6.0 Ft
7"	12:1	7.0 Ft	5.8 Ft	7.0 Ft
8"	12:1	8.0 Ft	6.7 Ft	8.0 Ft
9"	12:1	9.0 Ft	7.5 Ft	9.0 Ft
10"	12:1	10.0 Ft	8.4 Ft	10.0 Ft
11"	12:1	11.0 Ft	9.2 Ft	11.0 Ft
12"	12:1	12.0 Ft	10.0 Ft	12.0 Ft

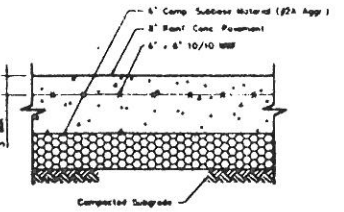
*CURB HEIGHT PLUS RISE OF SIDEWALK CROSS SLOPE

CURB RAMP DIMENSIONS EXISTING CONDITION*

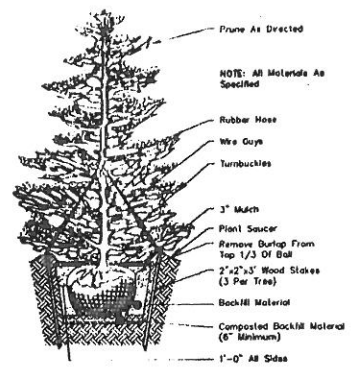
MAX. RISE OF RAMP	MAX. RAMP SLOPE	NORMAL RAMP LENGTH (12:1)	SIDE FLARE DIMENSION AT CURB (10:1)	SIDE FLARE DIMENSION AT CURB (12:1)
3"	8:1	2.0 Ft	2.5 Ft	3.0 Ft
4"	10:1	3.3 Ft	3.3 Ft	4.0 Ft
5"	10:1	4.2 Ft	4.2 Ft	5.0 Ft
6"	10:1	5.0 Ft	5.0 Ft	6.0 Ft

*USE ONLY WHEN SPACE LIMITATIONS PROHIBIT THE CONSTRUCTION OF 12:1 OR FLATTER SLOPES

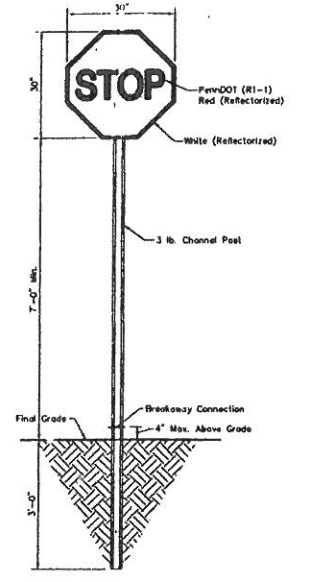
- Notes:**
- Provide Materials And Construction Meeting The Requirements Of Publication 408 Specifications, Sections 630, 676, 430, 421 And 422
 - Provide 1/2" Expansion Joint Material Where Curb Ramp Adjoins Any Roadway Structure Or Structure With The Top Of Joint Filler Flush With Adjacent Concrete Surface
 - If Position Constraints Are Not Wide Enough To Provide Minimum 4'-0" Side Shoulder Overlap Line At The Bottom Of The Ramp, Position Crosswalk As Indicated In Detail A
 - Use Joints With An Approved Sealing Material
 - Provide Slip Resistant Texture On Curb Ramps By Course Becoming Inoperative To The Slope Of The Ramp. Island Textures The Full Width And Length Of The Curb Ramp Including Flare Side Ramps
 - Construction Details Shall Be Modified To Adapt Dimensions To Existing Curb Dimensions Where The Curb Is Less Than The Standard 8" High Height
 - Curb Ramp And Side Flare Lengths Are Variable And Based On Curb Height And The Sidewalk Finish
 - Depressed Curb Will Be Measured And Paid For In Accordance With Section 530.4
 - Whenever Possible Construct The Transition Slope From The Curb Ramp And Flare Sides To Adjoining Surfaces With A Graded Curve Rather Than An Abrupt Angle
 - Build up Curb Ramps To Be Constructed of Bituminous Material As Indicated, Including Surface Preparation And Tack Coat, As Required



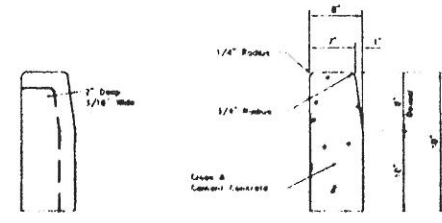
CONCRETE DUMPSTER PAD
NOT TO SCALE



TYPICAL EVERGREEN TREE PLANTING
NOT TO SCALE

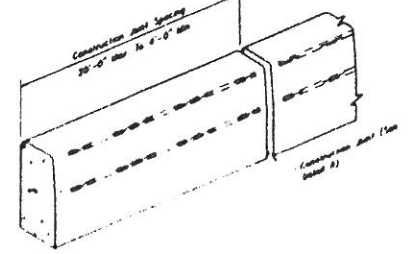


STOP SIGN
NOT TO SCALE

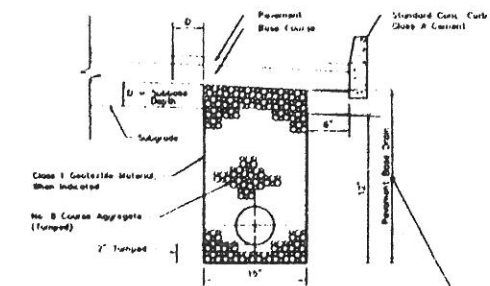


DETAIL A CONSTRUCTION JOINT

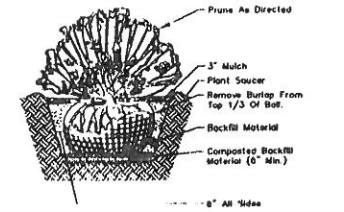
TYPICAL CROSS SECTION



PLAIN CEMENT CONCRETE CURB
NOT TO SCALE

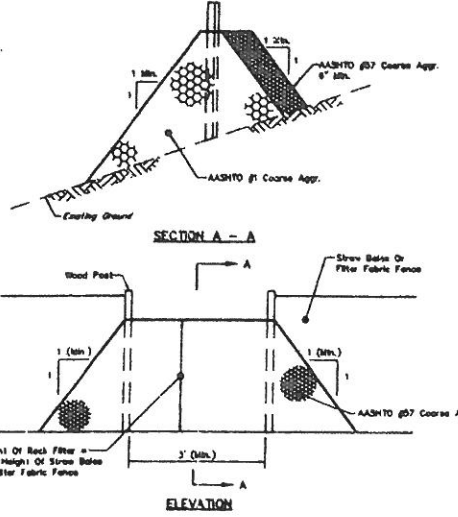


TYPICAL PAVEMENT BASE DRAIN
NOT TO SCALE

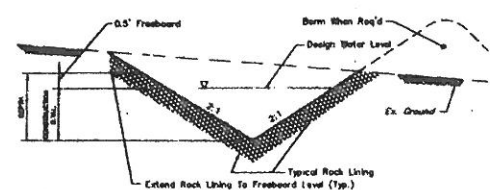


TYPICAL SHRUB PLANTING
NOT TO SCALE

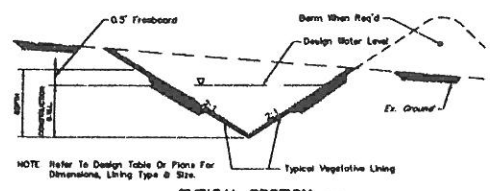
<p>Dauphin Engineering Company ENGINEERS • CONSULTANTS • PLANNERS 44 Oak Park Road • Harrisburg, PA 17109 PHONE: (717) 565-5142 E-MAIL: DAUPHINC@COMcast.net</p>		<p>REVISIONS</p>
<p>CENTURY DRIVE ASSOCIATES (Owner & Developer) 856 CENTURY DRIVE MECHANICSBURG, PA 17055 PHONE: (717) 697-3304</p>		<p>DATE</p>
<p>PRELIMINARY/FINAL SUBDIVISION & LAND DEVELOPMENT PLAN</p>		<p>7/17/00</p>
<p>MISCELLANEOUS CONSTRUCTION DETAILS</p>		<p>DATE</p>
<p>CHECKED BY: J.W.S.</p>		<p>DATE</p>
<p>DRAWN BY: C.K.N.</p>		<p>DATE</p>
<p>SCALE: AS NOTED</p>		<p>DATE</p>
<p>CONTOUR INT: N/A</p>		<p>DATE</p>
<p>DATE: 7/14/00</p>		<p>DATE</p>
<p>SHEET NO: 17 OF 19</p>		<p>DATE</p>



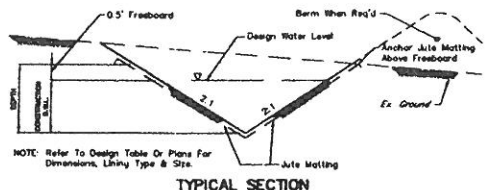
ROCK FILTER OUTLET
NOT TO SCALE



TYPICAL SECTION TEMPORARY ROCK-LINED SWALE
NOT TO SCALE



TYPICAL SECTION TEMPORARY GRASS-LINED SWALE
NOT TO SCALE



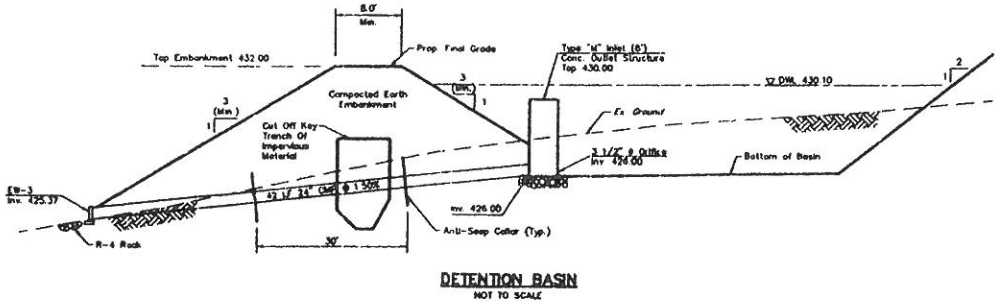
TYPICAL SECTION TEMPORARY JUTE-LINED SWALE
NOT TO SCALE

SWALE DESIGN											
SWALE	MAX. D.A. (Ac.)	SLOPE (H)	Q (cfs)	V (fps) (n=0.020)	V (fps) (n=0.040)	CONSTR. D.W.L. (ft.)	TOTAL DEPTH (ft.)	BOTTOM WIDTH (ft.)	SIDE SLOPE	LINING TYPE	COMMENTS
X	X	X	X	X	X	X	X	X	X	X	X
X	X	X	X	X	X	X	X	X	X	X	X
X	X	X	X	X	X	X	X	X	X	X	X
X	X	X	X	X	X	X	X	X	X	X	X
X	X	X	X	X	X	X	X	X	X	X	X
X	X	X	X	X	X	X	X	X	X	X	X
X	X	X	X	X	X	X	X	X	X	X	X
X	X	X	X	X	X	X	X	X	X	X	X
X	X	X	X	X	X	X	X	X	X	X	X
X	X	X	X	X	X	X	X	X	X	X	X

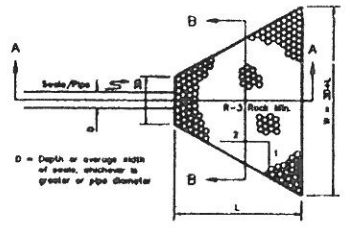
Notes: Stabilize swales immediately with specified lining. * Reference to erosion control blanket by (North American Green).
 If swales are constructed in a non-growing season substitute jute matting for grass lining. Vegetation can then be established in the spring.
 If swales are constructed in existing rock, no lining is required.
 For additional swale design data refer to Erosion and Sedimentation Control Plan Narrative.
 Design Q = 1.6 cfs/acre (Temporary Swale)
 Design Q = 2.75 cfs/acre (Permanent Swale)
 Design freeboard = 0.5 feet (min.)
 Manning's "n" values used for design: n (bare earth) = 0.020
 n (established lining) = 0.040

SEDIMENT TRAP DESIGN DATA		
DESCRIPTION	TRAP DESIGNATION	
	A	B
MAXIMUM DRAINAGE AREA	Ac.	Ac.
STORAGE REQUIRED	FL ²	FL ²
STORAGE PROVIDED	FL ²	FL ²
DESIGN DIMENSIONS		
Avg. Length	FL	FL
Avg. Width	FL	FL
Water Level Depth	FL	FL
CLEANOUT DEPTH	FL	FL
ROCK SPILLWAY WIDTH	FL	FL

SEDIMENT TRAP ELEVATION TABLE		
DESCRIPTION	TRAP DESIGNATION	
	A	B
TOP OF EMBANKMENT ELEVATION	ELEV.	ELEV.
DESIGN WATER LEVEL	ELEV.	ELEV.
SEDIMENT CLEANOUT ELEVATION	ELEV.	ELEV.
BOTTOM OF TRAP ELEVATION	ELEV.	ELEV.



DETENTION BASIN
NOT TO SCALE

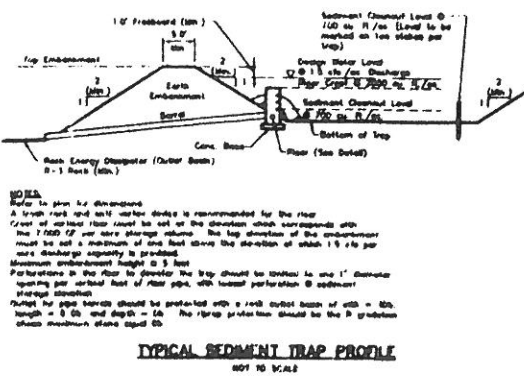


PLAN

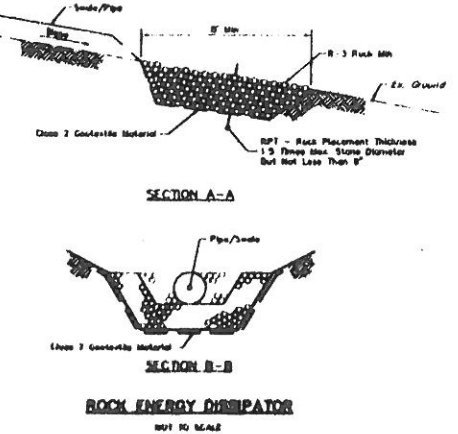
ROCK OUTLET BASIN ENERGY DISSIPATOR TABLE						
REFERENCE	MAXIMUM DISCHARGE Q (cfs)	DISCHARGE BARREL PIPE SIZE (in.)	RIPY (ft.)	L (ft.)	W (ft.)	ROCK SIZE (Req'd)
X	X	X	X	X	X	X
X	X	X	X	X	X	X
X	X	X	X	X	X	X
X	X	X	X	X	X	X
X	X	X	X	X	X	X
X	X	X	X	X	X	X

Notes: Refer to rock energy dissipator detail.
 Design source: USDA-SCS, Apron design, Minimum tailwater condition.

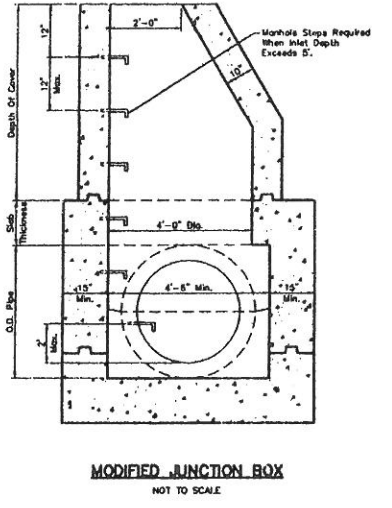
ROCK PLACEMENT THICKNESS	
ROCK	DEPTH (ft.)
R-3	0.75
R-4	1.50
R-5	2.25
R-6	3.00
R-7	3.75



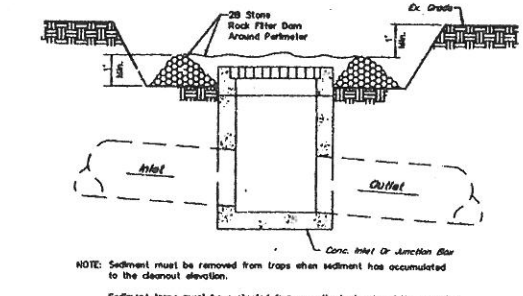
TYPICAL SEDIMENT TRAP PROFILE
NOT TO SCALE



SECTION A-A
SECTION B-B
ROCK ENERGY DISSIPATOR
NOT TO SCALE

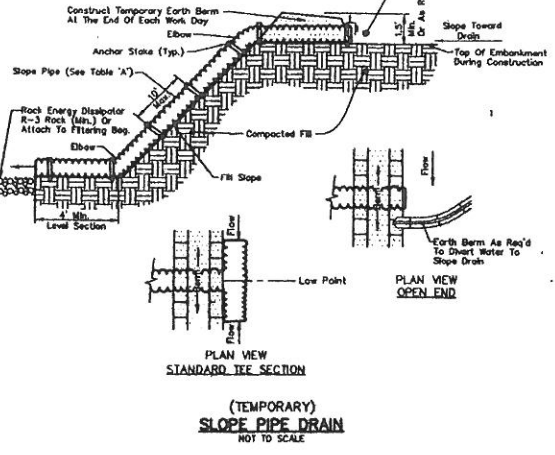


MODIFIED JUNCTION BOX
NOT TO SCALE

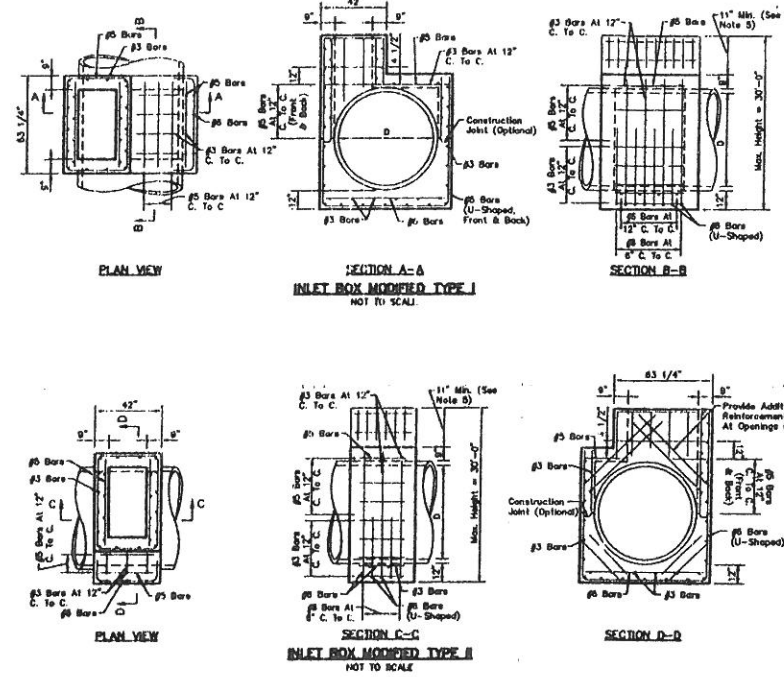


ROCK DAM FILTER FOR INLET PROTECTION
NOT TO SCALE

TABLE 'A' (Suggested Minimum Sizes)		
DRAINAGE AREA (ACRES)	SMOOTH PIPE SIZE (DIAMETER)	CORRUGATED PIPE SIZE (DIAMETER)
0-3	8"	12"
3-6	10"	15"
6-10	12"	18"



PLAN VIEW OPEN END
STANDARD TEE SECTION
(TEMPORARY) SLOPE PIPE DRAIN
NOT TO SCALE



NOTES:
 1. Construct in accordance with the requirements of Publication 408, Section 605 and Section 714.
 2. Inlets that exceed the maximum height shown shall require special details and design for the inlet water and base. Construct inlets that exceed 5 feet in height with steps similar to manholes. See RC-39.
 3. When a situation can not be satisfied by the modified inlet boxes shown, special details and design shall be provided.
 4. For orientation of the Type C inlet with modified Type I inlet box, the typical installation details are shown below. Any variations shall be shown on the construction drawings by special details.
 5. Provide a minimum height of 20 inches measured from the top surface of the top unit to the top of the pipe above the top unit and elbow. A modified Type I or A modified Type II inlet box are constructed accordingly.
 6. Only present modified inlet boxes supplied by a manufacturer listed in Bulletin 15 shall be permitted. For a Bulletin 15 listing, submit a 22" x 30" reproducible shop drawing to the Bureau of Construction and Materials, Materials and Testing Division for Review and Approval.

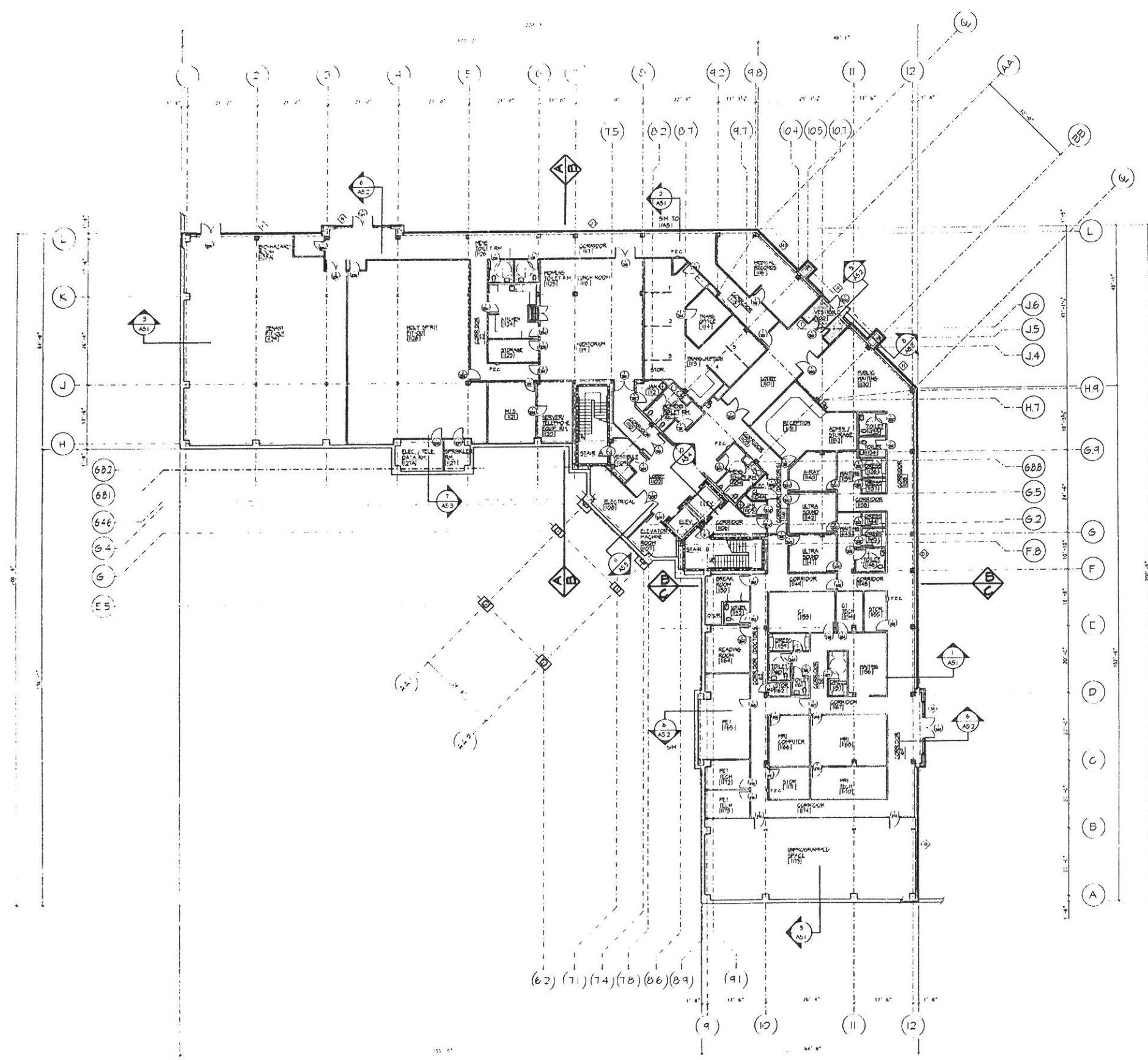
CENTURY DRIVE ASSOCIATES
 (Owner & Developer)
 856 CENTURY DRIVE
 MECHANICSBURG, PA 17055
 PHONE: (717) 697-3304

PRELIMINARY/FINAL
 SUBDIVISION & LAND DEVELOPMENT PLAN
 MISCELLANEOUS CONSTRUCTION
 DETAILS

DAUPHIN ENGINEERING COMPANY
 ENGINEERS - CONSULTANTS - PLANNERS
 4100
 PHONE: (717) 545-5342
 FAX: (717) 545-1034
 E-MAIL: DAUPHIN@AOL.COM

CHECKED BY: J.W.S.
 DRAWN BY: C.K.N.
 SCALE: AS NOTED
 CONTOUR INT: N/A
 DATE: 7/14/00
 SHEET NO: 19 OF 19

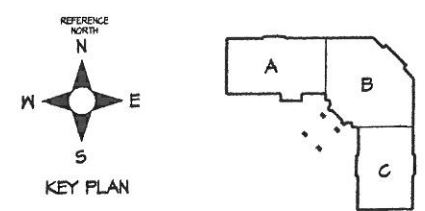
TOWNSHIP PLANNING COMMISSION COMMENTS = 7/24/00 M.O.S.
 DATE 7/27/00
 REVISIONS
 DAUPHIN COUNTY, PA
 STURBRIDGE - LOTS 144 - 146
 SUSQUEHANNA TOWNSHIP



LEGEND

— 1 HR. RATED PARTITION UL NO. U465

— 1 HR. RATED PARTITION UL NO. U405



FIRST FLOOR PLAN
SCALE 1/16" = 1'-0"



REVISION: THE CONTRACTOR SHALL VERIFY ALL DIMENSIONS, AND EXISTING CONDITIONS AT THE 'JOB BEFORE' PROCEEDING WITH EACH PHASE OF HIS WORK. THIS DRAWING, AS AN INSTRUMENT OF SERVICE, IS AND SHALL REMAIN THE PROPERTY OF THE ARCHITECT

MEDICAL OFFICE BUILDING CENTURY DRIVE ASSOCIATES		DEPARTMENT OF LABOR AND INDUSTRY APPROVAL	
CONSTRUCTION DOCUMENTS FIRST FLOOR PLAN		Murray Associates Architects, P.C. 1600 North Second Street Harrisburg, PA 17102-2499 717-234-2581 (fax 234-1201)	
PLOT NO.	A832FP01	DATE	MARCH 30, 2001
PROJECT NO.	2832	DRAWING NO.	A2.1